



ARCHITECTURAL | COMMERCIAL
INTERIOR DOORS



We invite you to discover what **over 40 years** of wood door manufacturing experience can bring to your next project.

A 3rd generation, **family-owned company** located in the beautiful Pacific Northwest, Lynden Door, Inc. builds **residential, commercial** and **architectural** doors suited for nearly every type of application or market segment, no matter the scale, location or complexity. Our **customization capabilities** and **wide breadth of interior door** styles and designs will offer a solution for any of your decor and building needs.

Lynden Door has a unique history of serving God through supporting the needs of its employees, their families and evangelical ministries in the community of Lynden, WA and beyond.

We trust that you will find our passion for crafting beautiful, durable, high quality doors and providing exceptional customer service is distinctly evident.

We are genuinely grateful for your business and support.



Photo Credit: Weber Thompson



THE RISE ON MADISON

1400 Madison, Seattle, WA

Developer: **Bellwether Housing & Plymouth Housing**

Contractor: **Turner Construction**

Architect: **Weber Thompson**

Products: **LD Architectural Series
Quarter Sliced White
Birch, Custom Stained**

As featured on cover page

EDGE OPTIONS

Architectural doors can be customized with various edge options to meet specific design and functionality requirements. When selecting an edge option for architectural and commercial doors, it is essential to consider factors such as the intended use, design style, and maintenance. Lynden Door offers the following edge options:



1. Wood Veneer Edge / VEB

Matching wood veneer is applied to the vertical edges of the door to provide a seamless and natural look. Veneered edges are applied after the faces to conceal any exposed crossband or substrate.

2. High Pressure Decorative Laminate Edge / HPDL

Matching HPDL is applied to the vertical edges or stiles of the door to provide a seamless and pleasing appearance. HPDL edges are applied after the faces to conceal any exposed crossband or substrate.

3. Hardwood Stile Edge / HWE

The vertical edges or stiles are composed of compatible or matching outer hardwood and SCL (Structural Composite Lumber) or mill option hardwood backer. Hardwood split face stiles ensure added durability for impact and are designed for factory prefit & beveled doors. *(When additional trimming is required, be sure to specify full-face stiles, see below).*

4. Full-Face Hardwood Edge / 3/4\"

The vertical stiles or edges are composed of a minimum 3/4\" solid compatible or matching outer hardwood prior to factory trimming or prefit. Full-face hardwood edges should be selected for use when retrofitting doors or where additional trimming / pre-fitting may be required. *(Note: Full-Face stiles are not available for doors rated over 20-minutes or any Category A fire door construction.)*

LD SERIES ARCHITECTURAL

Modern Architecture often calls for doors capable of meeting the highest levels of specification driven performance standards, fulfilling the complex design requirements for both the aesthetic and functional aspects of a project. This may include buildings that experience high traffic, heightened security, sound attenuation, and are required to comply with stringent life/safety conditions. Lynden Door has designed the **Architectural (LD) Series** with these projects in mind - architectural and commercial applications to comply with high standards of construction and design.

Lynden Door is committed to going the extra mile for our customers. Institutional projects such as hospitals, schools and office buildings can be complex, demanding many door types and sizes with a multitude of finish and hardware prep requirements. Beginning with your project quote and ending with delivery to your job site or door shop, our personalized service ensures you get what you need to meet your customer's requirements. Lynden Door provides a wide range of quality products and value-added services to meet your institutional project needs, with the expertise to do it right.



RIFT CUT
RED OAK



ROTARY WHITE
BIRCH



HORIZONTAL
WALNUT



PLAIN SLICED
CHERRY

INSTITUTIONAL • OFFICE HIGH RISE • HOSPITALITY

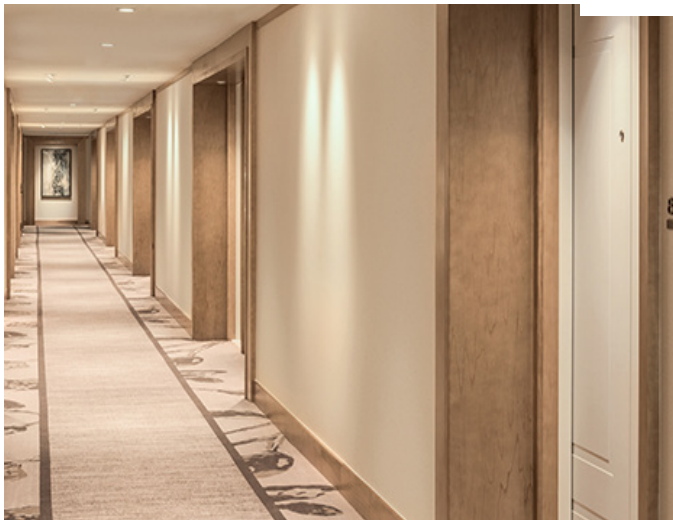
K-12 AND HIGHER EDUCATION, HEALTHCARE, CLASS A OFFICE
HIGH-RISE, LUXURY HOTELS, GOVERNMENT, MILITARY



Learn more about
our LD SERIES

Custom Routed, Painted Hardboard

PROJECT: JW Marriott Parq Vancouver



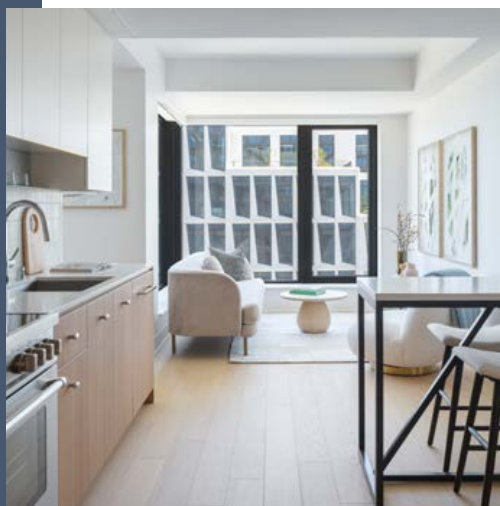
- Bonded / Sanded Core Assembly
- DHA Custom 'A' and Premium 'AA' grade wood veneer, HPDL and High Density MDF faces available
- Meets Extra-Heavy-Duty Performance Standards as noted by WDMA I.S. 1-A, AWI (AWS), AWMAC and WI (NAAWS)
- Lead-lined and Other Specialty Core Options Available
- Meets CARB Phase II, TSCA Title VI and SOR/2021-48 formaldehyde emissions requirements
- 20, 45, 60 and 90-Minute Fire Door Options Available
- Sustainable and Acoustical Rated Options Available



PHOTO CREDIT: © Jason O'Rear

MISSION ROCK PARCEL A
San Francisco, California

Developer: **Tishman Speyer**
 Contractor: **Swinerton**
 Architect: **Perry Architects**
 Products: **LD24 with custom stained Rift White Oak / VanAir**



VENTILATED RIFT
WHITE OAK

CD / IC SERIES COMMERCIAL

Doors Designed for commercial applications meet specific standards of construction. **CD and IC Series** doors meet WDMA performance standards and may be used in applications where an architectural door (LD Series) would typically be specified, but where the application is less rigorous than the architectural standard.



HIGH PRESSURE
DECORATIVE
LAMINATE



ROTARY
WHITE MAPLE



STILELINE
WHITE OAK



ROTARY
NATURAL BIRCH

PROJECT: *Park at Bankers Hill*



Painted Hardboard

CD SERIES

- Bonded Core Assembly
- HPVA Architectural "A" Grade Wood Veneer
- Matching Hardwood or Softwood Vertical Stile Options Available
- Meets Performance Standards as noted by WDMA I.S 1-A, AWI (AWS), AWMAC and WI (NAAWS)
- Meets CARB Phase II, TSCA Title VI and SOR/2021-148 formaldehyde emissions requirements
- 20, 45, 60 and 90-Minute Fire Door Options Available
- Sustainable and Acoustical Rated Options Available

IC SERIES

- Bonded Core Assembly
- Limited Wood Veneers: Rotary Natural Birch, Rotary Uniform Light Birch, Rotary White Maple, Plain Sliced Red Oak
- Matching Hardwood or Softwood Vertical Stile Options Available
- Meets Performance Standards as noted by WDMA I.S. 1-A, AWI (AWS), AWMAC and WI (NAAWS)
- Meets CARB Phase II, TSCA Title VI and SOR/2021-148 formaldehyde emissions requirements.
- 20 and 45-Minute Fire Door Options Available
- Sustainable Options Available

Because all our operations are under one roof, we have unique value engineering capabilities, including optimizing product durability and appearance. We also have value-added services such as factory finishing, ensuring consistency and quality, and tightly specified machining ensuring hardware preparation accuracy. In addition, we have staged delivery options that make sure you have product when and where you need it. Lynden Door provides services that allow you to deliver products at a variety of price points to serve your customer's needs.

PROJECT: *181 Fremont*



Custom Walnut

RETAIL • OFFICE • MIXED-USE

RESTAURANTS, SHOPPING CENTERS, LIBRARY, THEATER,
HOTEL COMMON AREAS



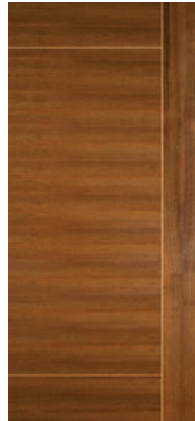
Learn more about
our CD SERIES



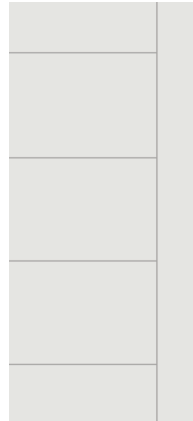
Learn more about
our IC SERIES

SD SERIES / STANDARD CONSTRUCTION

Interior Doors designed for light commercial applications. Our **Standard Construction** doors present a wide range of features, sizes, profiles and finishes with competitive pricing.



STILELINE WALNUT CUSTOM ROUTED



ROUTED PRIMED HARDBOARD



HIGH DENSITY MOLDED FIBERBOARD



PREFINISHED HARDBOARD RIFT CUT SLATE

- Wood Veneers, Molded Profiles, Pre-finished and Smooth or Embossed and Primed Flush.
- 1-3/8" (H8 & P8) Non-Rated; 1-3/4" (H4 & P4) Non-Rated and 20-Minute (P20) Fire Rated Options Available
- Hollow or Solid Core Construction
- Meets CARB Phase II, TSCA Title VI and SOR/2021-148 formaldehyde emission requirements
- Custom Factory Stain and Custom Paint Options Available

PROJECT: *Inn at Lynden*



High Density Molded Fiberboard



LIGHT COMMERCIAL

MULTI-FAMILY • ASSISTED LIVING • HOSPITALITY

EXTENDED STAY HOTELS, STUDENT HOUSING,
APARTMENTS, LONG TERM CARE FACILITIES



Learn more about
our SD SERIES



PROJECT: *Maple Street Lofts*

Lynden Door builds a full range of doors to meet virtually every application – doors that are durable enough to survive the daily rigors of the most highly trafficked and used spaces in the built environment. Our breadth of product offering, from veneer, hardboard and molded profiles, ensure that a single vendor can meet all interior door needs for a wide range of projects.



Prefinished Hardboard Rift Cut Slate | Molded Mercer, Flat Panel & Smooth | PHOTO CREDIT: Nicholas & Associates, Inc.

VENTILATED DOOR

The Lynden Ventilated Door challenges the traditionally held views of what a door is supposed to do. It is becoming an essential component of a commercial building's circulation system.

Ventilated doors provide architects and designers with the ability to create simple air flow pathways. This reduces the need for vents, grilles, dropped ceilings and ducting which can interfere with surrounding design elements and aesthetics.

RETAIL • OFFICE • ASSISTED LIVING • HOSPITALITY



AIRFLOW PATHWAY

Air flows in from one side, through the door core and out the opposing side.

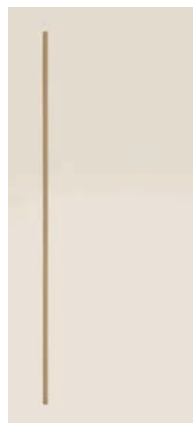


SOUND PRIVACY

Lab-tested baffling and resonators are integrated into the door core to block high and low frequency sound.



**VENTILATED
STILELINE
WALNUT**



**VENTILATED
PRIMED
HARDBOARD**



**VENTILATED
ROTARY NATURAL
MAPLE**



**VENTILATED
PREFINISHED
HARDBOARD RIFT
WALNUT**

VanAir™ Ventilated Door



PROJECT: *Vancouver Public Library*

Every Lynden Ventilated Door can be made to specification in a wide array of widths, heights, wood veneers, and finishes to ensure compatibility with your project. Specify air flow and sound privacy performance to suit your project needs.

- Create Comfortable Room Environments by Alleviating Temperature, Humidity and Pressure Build-up
- Reduce Carbon Dioxide Build-up for Healthier Spaces

- 1-3/8" and 1-3/4" Non-rated
- Keep Laundry Appliances, Bathroom Exhaust Fans and Mechanical Equipment Running Efficiently
- Improve Ventilation Without Having to Use Unsightly Vents and Grilles
- Wood Veneers, Pre-finished and Primed Hardboard and High Pressure Decorative Laminate



Ventilated Rift Cut White Oak

PROJECT: *Travelers Insurance*



CONSTRUCTION ATTRIBUTES

VENEER (RESIDENTIAL/LIGHT COMMERCIAL)
 VENEER (COMMERCIAL SKINS)
 PRIMED FLUSH (MDF)
 PAINT GRADE (MDO)
 PREFINISHED HARDBOARD
 LAMINATE (HPDL)
 MOLDED (RAISED PANEL)
 MOLDED (FLAT PANEL)
 1-3/8" (NON-RATED)
 1-3/4" *
 CORE
 LEAD-LINED
 NON-BONDED ASSEMBLY
 BONDED ASSEMBLY
 FIBER (MDF) / SOFTWOOD
 FINGERJOINT EDGE
 SCS INDOOR ADVANTAGE GOLD
 SOLID SOFTWOOD
 HARDWOOD / MATCHING EDGE
 FIRE-RATED
 CARB PHASE II / TSCA
 TITLE VI / CEPA
 CERTIFIED
 WOOD

LYNDEN VENTILATED DOOR																				
VA8	•	•	•	•	•	•	•	•	•	•	•	•	•	•	•	•	•	•	•	•
VA4	•	•	•	•	•	•	•	•	•	•	•	•	•	•	•	•	•	•	•	•
ARCHITECTURAL (LD)																				
LD2000	•	•	•	•	•	•	•	•	•	•	•	•	•	•	•	•	•	•	•	•
LD2500	•	•	•	•	•	•	•	•	•	•	•	•	•	•	•	•	•	•	•	•
LD3500	•	•	•	•	•	•	•	•	•	•	•	•	•	•	•	•	•	•	•	•
LD45-AG	•	•	•	•	•	•	•	•	•	•	•	•	•	•	•	•	•	•	•	•
LD4500	•	•	•	•	•	•	•	•	•	•	•	•	•	•	•	•	•	•	•	•
LD6000	•	•	•	•	•	•	•	•	•	•	•	•	•	•	•	•	•	•	•	•
LD9000	•	•	•	•	•	•	•	•	•	•	•	•	•	•	•	•	•	•	•	•
SOUND TRANSMISSION CLASS (STC)																				
LDSD (36-49)	•	•	•	•	•	•	•	•	•	•	•	•	•	•	•	•	•	•	•	•
COMMERCIAL (CD)																				
CD200	•	•	•	•	•	•	•	•	•	•	•	•	•	•	•	•	•	•	•	•
CD250	•	•	•	•	•	•	•	•	•	•	•	•	•	•	•	•	•	•	•	•
CD350	•	•	•	•	•	•	•	•	•	•	•	•	•	•	•	•	•	•	•	•
CD45-AG	•	•	•	•	•	•	•	•	•	•	•	•	•	•	•	•	•	•	•	•
CD450	•	•	•	•	•	•	•	•	•	•	•	•	•	•	•	•	•	•	•	•
CD600	•	•	•	•	•	•	•	•	•	•	•	•	•	•	•	•	•	•	•	•
CD900	•	•	•	•	•	•	•	•	•	•	•	•	•	•	•	•	•	•	•	•
INTERIOR COMMERCIAL (IC)																				
IC200	•	•	•	•	•	•	•	•	•	•	•	•	•	•	•	•	•	•	•	•
IC350	•	•	•	•	•	•	•	•	•	•	•	•	•	•	•	•	•	•	•	•
IC2000	•	•	•	•	•	•	•	•	•	•	•	•	•	•	•	•	•	•	•	•
IC3500	•	•	•	•	•	•	•	•	•	•	•	•	•	•	•	•	•	•	•	•
IC45AG	•	•	•	•	•	•	•	•	•	•	•	•	•	•	•	•	•	•	•	•
STANDARD CONSTRUCTION																				
H8 (Hollow 1-3/8")	•	•	•	•	•	•	•	•	•	•	•	•	•	•	•	•	•	•	•	•
H4 (Hollow 1-3/4")	•	•	•	•	•	•	•	•	•	•	•	•	•	•	•	•	•	•	•	•
P8 (Particle 1-3/8")	•	•	•	•	•	•	•	•	•	•	•	•	•	•	•	•	•	•	•	•
P4 (Particle 1-3/4")	•	•	•	•	•	•	•	•	•	•	•	•	•	•	•	•	•	•	•	•
P20 (Particle 1-3/4" 20-Min)	•	•	•	•	•	•	•	•	•	•	•	•	•	•	•	•	•	•	•	•
45-Min Rated Agfiber	•	•	•	•	•	•	•	•	•	•	•	•	•	•	•	•	•	•	•	•
45-Min Rated Mineral	•	•	•	•	•	•	•	•	•	•	•	•	•	•	•	•	•	•	•	•
60-Min Rated Mineral	•	•	•	•	•	•	•	•	•	•	•	•	•	•	•	•	•	•	•	•
90-Min Rated Mineral	•	•	•	•	•	•	•	•	•	•	•	•	•	•	•	•	•	•	•	•

*Please note that the LDSD 49 is 2-1/4" thick



Lynden Door, Lynden WA



SUSTAINABILITY

To learn more about the LEED, Green Globes®, and other sustainable programs and compliance options please scan the QR code.



**LYNDEN DOOR CARE & HANDLING INSTRUCTIONS
FACTORY WARRANTIES**

For information, please scan the QR code.

2077 MAIN ST., P.O. BOX 528
LYNDEN, WA 98264

PHONE: 800.631.DOOR (3667)
360.354.5676
FAX: 360.354.3738

INFO@LYNDENDOOR.COM

*PHOTO CREDIT: MORIS MORENO
PHOTOGRAPHY*



@LYNDENDOORINC | LYNDENDOOR.COM



LD500 01/24 ©2024 Lynden Door, Inc. All rights reserved. Printed in USA.